

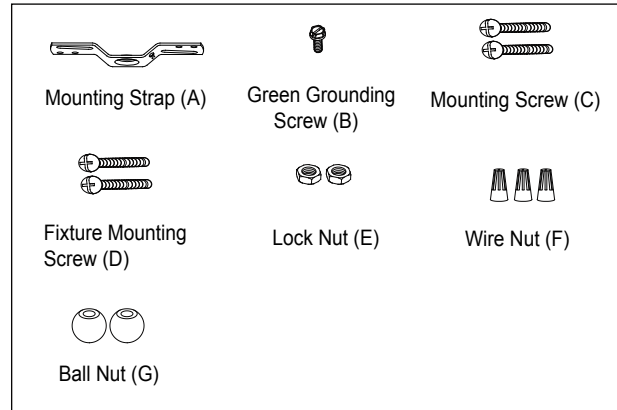
# ASSEMBLY AND INSTALLATION INSTRUCTIONS

P0196 / P0228

**WARNING:** TO AVOID RISK OF ELECTRICAL SHOCK, BE SURE TO SHUT OFF POWER WHILE INSTALLING OR SERVICING THIS FIXTURE.

**NOTES:** 1. Before installing, consult local electrical codes for wiring and grounding requirements.  
2. READ AND SAVE THESE INSTRUCTIONS.

## Hardware Package (included):



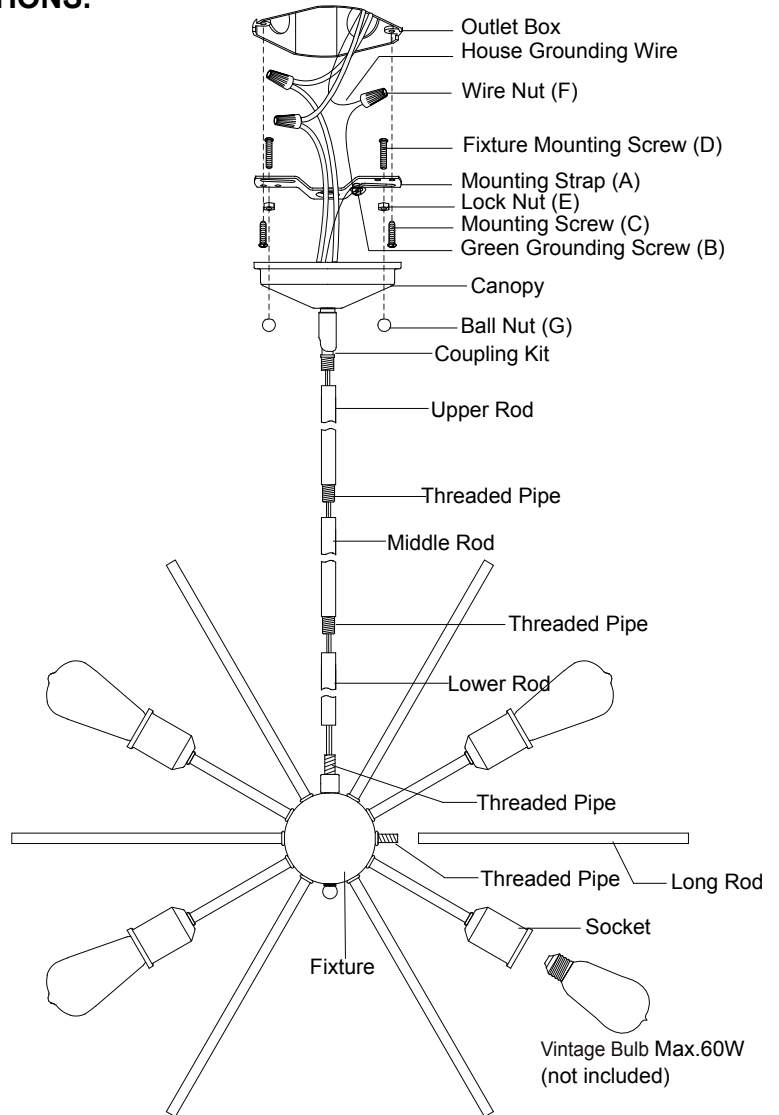
## Installation Steps

Turn off the power at fuse or circuit box.

1. Thread fixture mounting screws through mounting strap, and then secure them with two lock nuts. Adjust the length of fixture mounting screws if necessary.
2. Attach mounting strap to outlet box using two mounting screws.
3. Rod Connections:
  - a. Thread the fixture wire from the fixture through the lower rod, and then secure the lower rod onto fixture using the threaded pipe.
  - b. Thread the fixture wire through the middle rod, and then secure the middle rod onto the lower rod using the threaded pipe.
  - c. Thread the fixture wire through the upper rod, and then secure the upper rod onto the middle rod using the threaded pipe.

**Note:** Length adjustable from 30-1/2" to 75-1/2". Use fewer rods if shorter length is desired.

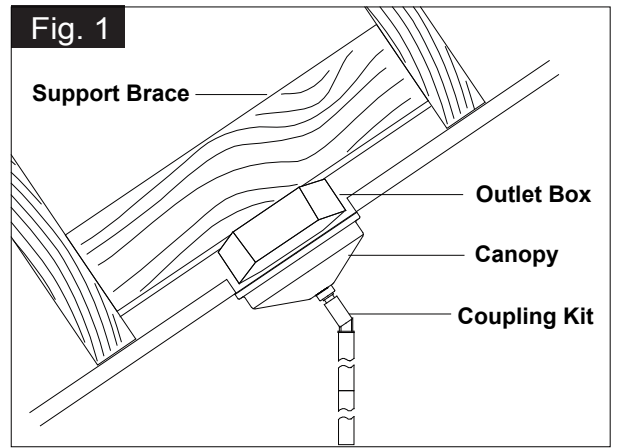
4. Thread the fixture wire through coupling kit, canopy, and then secure the rod assembly to the coupling kit.
5. Screw 12 long rods to the other threaded pipes of fixture.
6. Install bulbs (not included). See relamping label at socket area or packaging for maximum allowed wattage.
7. Pull out the source wires from the outlet box. Make wire connections using wire nuts as follows:
  - Connect the smooth-coated wire (marked) from the fixture to the black wire from the power source.
  - Connect the ribbed-coated wire (unmarked) from the fixture to the white wire from the power source.
  - Attach the fixture grounding wire to the mounting strap with the green grounding screw, and then connect it to the house grounding wire with a wire nut.
 Carefully put the wires back into the outlet box.



8. Attach the canopy to the mounting strap, and then secure it with two ball nuts.

9. Angled mounting recommended for a vaulted or angled ceiling.  
(See Fig. 1)

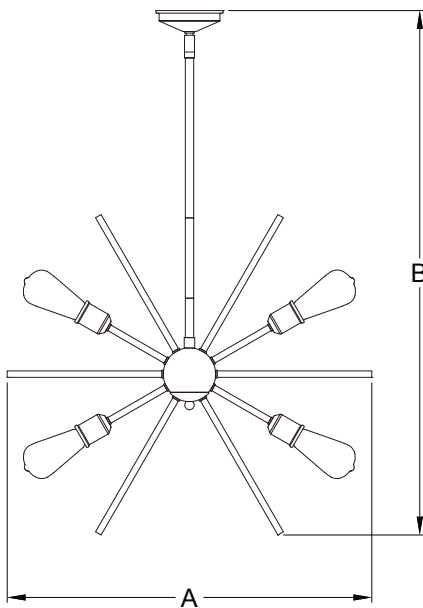
Turn on the power at fuse or circuit box.



The following parts are available for re-order if damaged or missing.

**Spare Parts List:**

				Assembly Kit 5451MM (1 SET) FOR P0196 5688MM (1 SET) FOR P0228
Mounting Strap (A)	Green Grounding Screw (B)	Mounting Screw (C)	Fixture Mounting Screw (D)	
Lock Nut (E)	Wire Nut (F)	Ball Nut (G)		
12"Rod 3068RD FOR P0196 3089RD FOR P0228	6"Rod 3069RD FOR P0196 3090RD FOR P0228	3"Rod 3070RD FOR P0196 3091RD FOR P0228	Long Rod 295mm 5451DD FOR P0196 3092RD FOR P0228	



A: 27-1/2"

B: 30-1/2"~75-1/2"